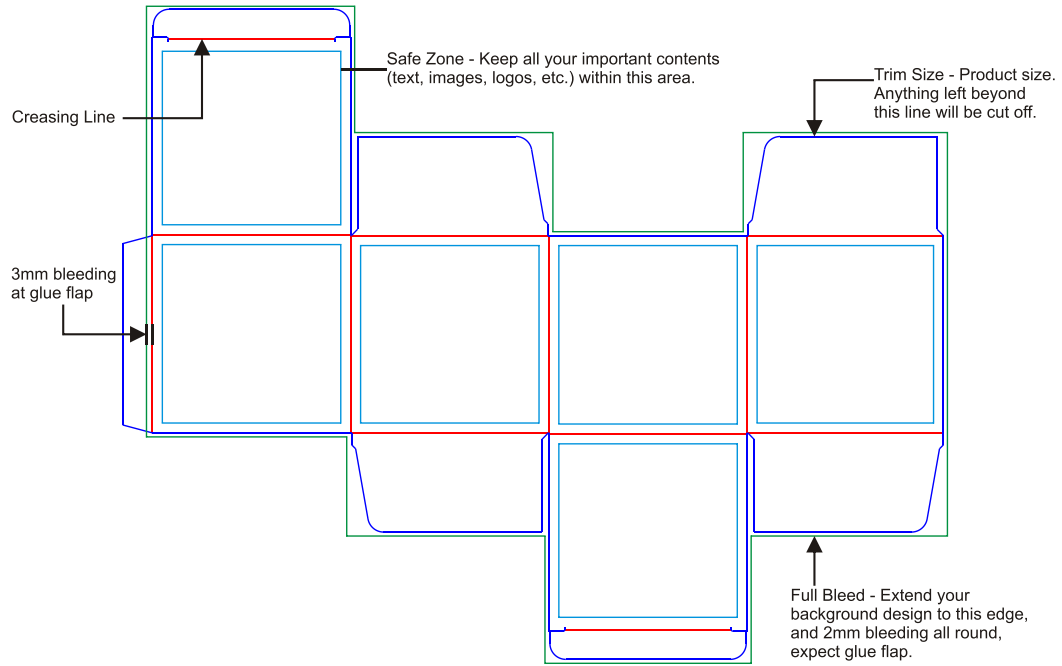


Artwork Dimension & Specification

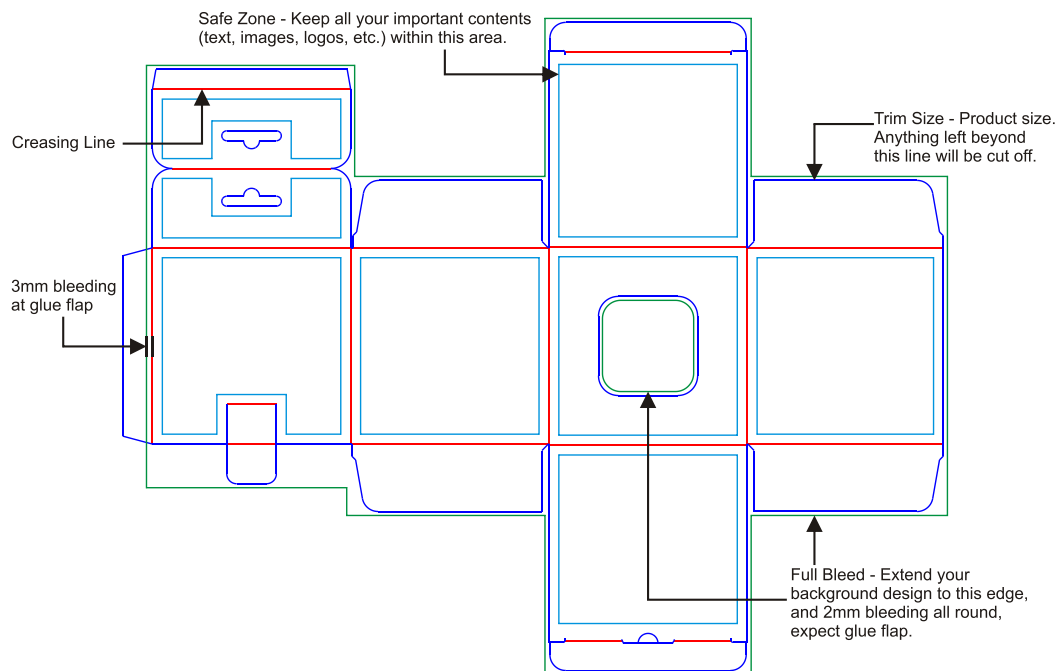
Printing Artwork Preparation

1. Printing side only allow for Front/Outer (4C).
2. Printing artwork is not allow to print at gluing area (Example: Glue flap and Auto Lock box structure with gluing area).
3. Top Cover / Top Panel and Bottom Cover / Bottom Panel artwork need to bleed out onto Dust Flap (instead of the Left and Right Dust Flap bleeding out towards the Top Panel).



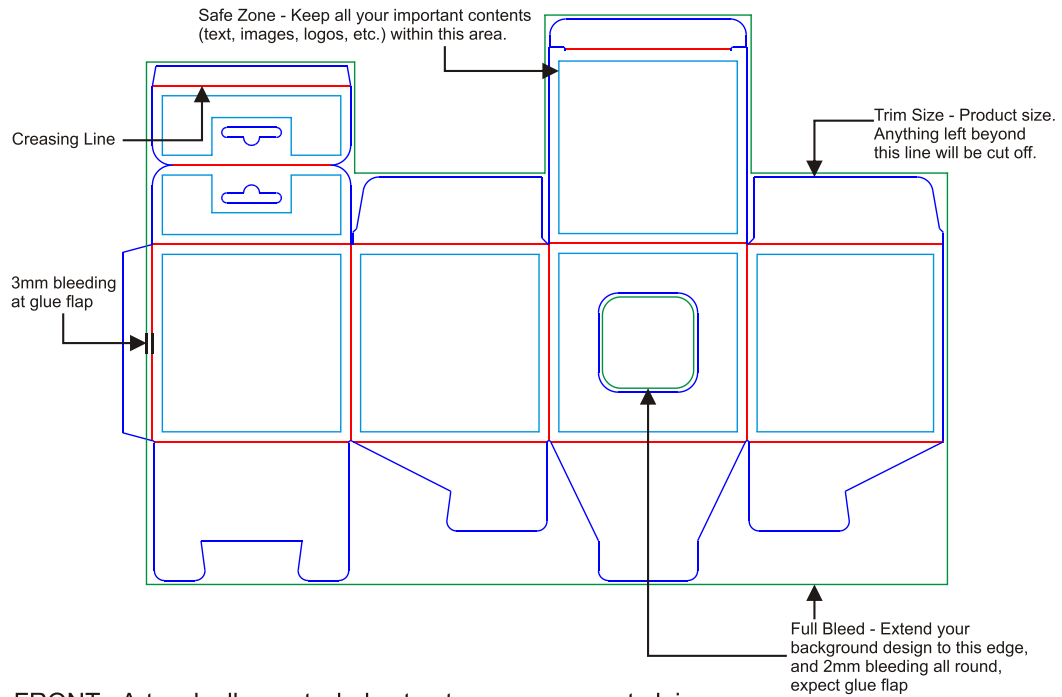
FRONT - Artwork allows at whole structure area, expect gluing area.

Example of Basic Box with Reverse Tuck



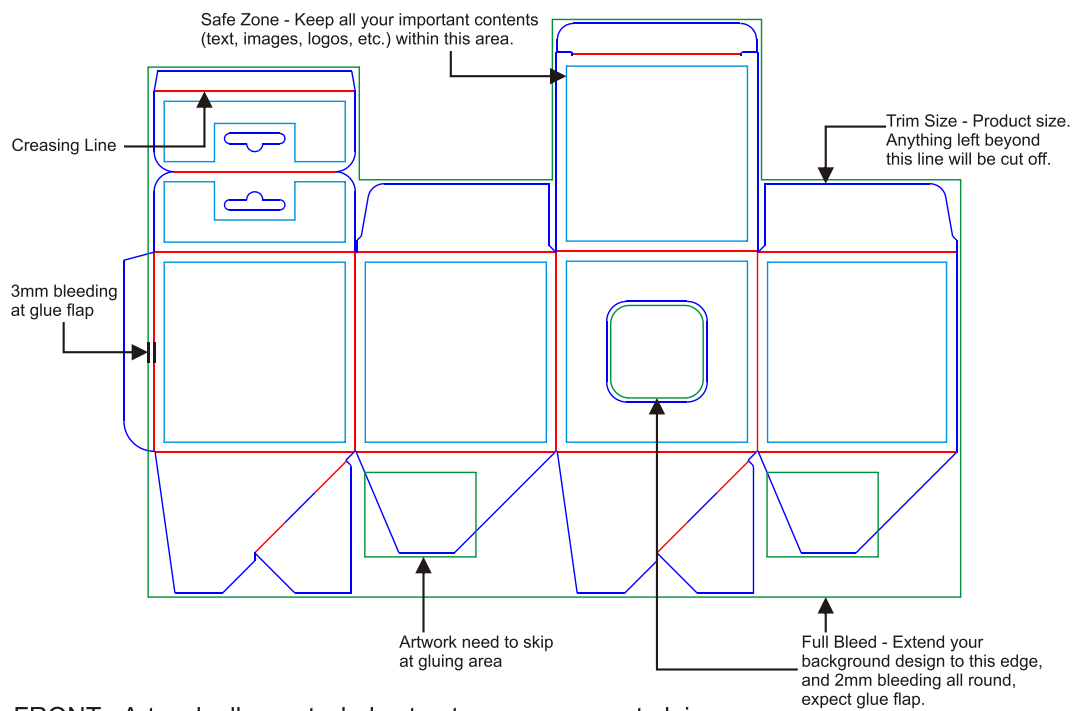
FRONT - Artwork allows at whole structure area, expect gluing area.

Example of Hanging + Window Box with Straight Tuck



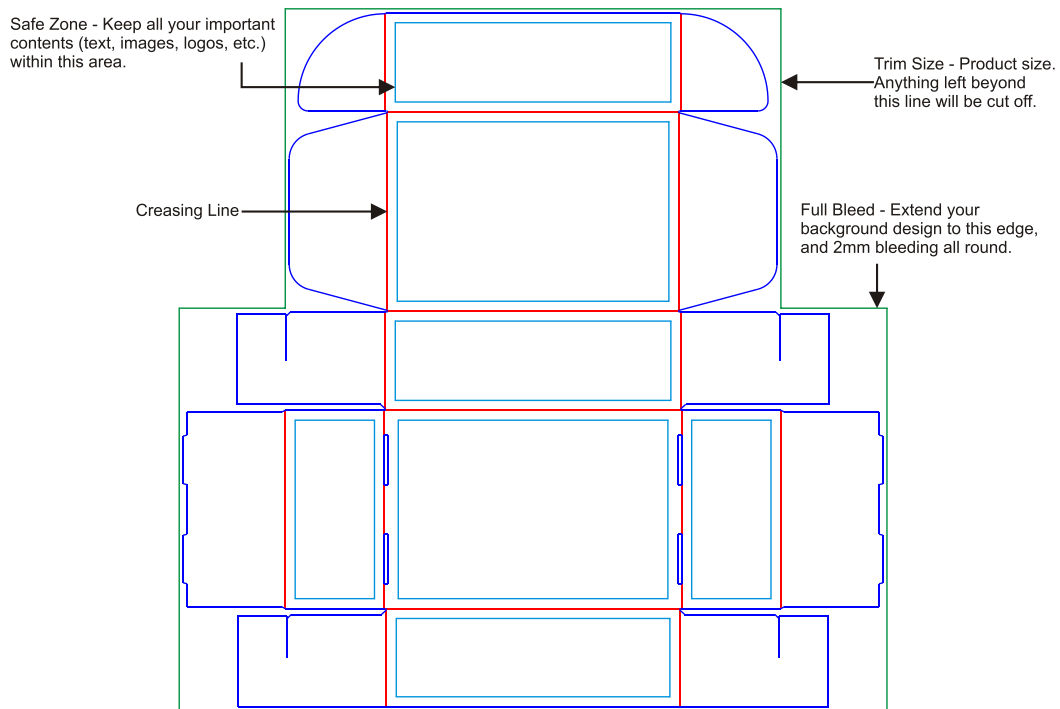
FRONT - Artwork allows at whole structure area, expect gluing area.

Example of Hanging + Window Box with Semi Auto Bottom Lock



FRONT - Artwork allows at whole structure area, expect gluing area.

Example of Hanging + Window Box with Straight Tuck



FRONT - Artwork allows at whole structure area, expect gluing area.

Example of Hinged Lid Box (Box without Gluing Area)

Bleeding : Add 2.0mm for Bleeding on all sides and Window.
Except for Glue Flap (3.0mm onto the Glue Flap).
Bleed out instead of full fill of color.

Safe Zone : 5.0mm on all sides from the edges and creasing at Glue Flap.

Image :

- 1.) All image are in CMYK color mode only.
- 2.) Resolution of all images must be set to 300dpi or above.

Font :

- 1.) Font size cannot be less than 4.0points.

Line :

- 1.) Line thickness cannot be less than 0.25points.

File Preparation :

- 1.) Artwork is saved in required file format Adobe Acrobat 5 – version 1.4 (.pdf).
- 2.) Resolution 300dpi and color mode CMYK.
- 3.) PDF files must prepare for artwork :

Layer 1: Full printable artwork

Layer 2: The die cut line

Layer 3: The creasing line